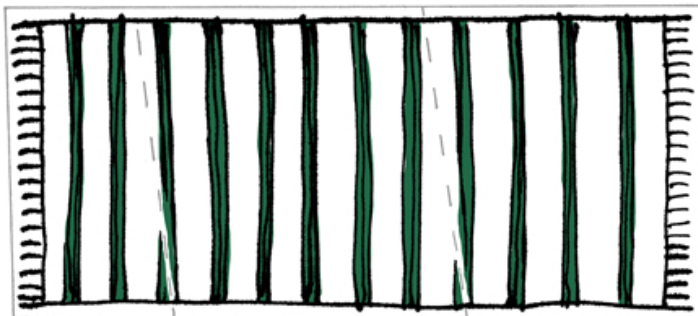




(M)



(L)

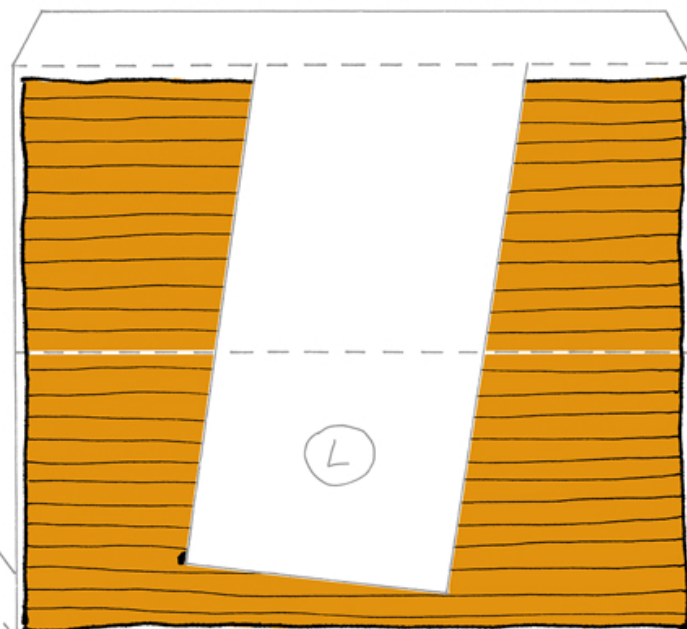
ADAGIA IL TAPPETO
SUL TETTO DELLA CASA DELLA
FAMIGLIA CARTACCIOLI
(IL COLFO DOVREBBE AVERLO
GIÀ BATTUTO PER BENE CON
IL FLATTIPANNI)

il Colfo

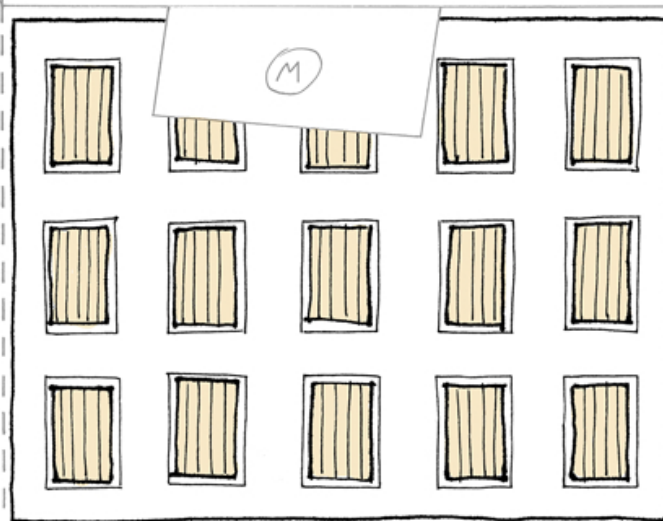
IL COLFO (Metaurus Lindus)

Difficile vederlo al lavoro,
ama frequentare i salotti mondani
e ha partecipato alla versione
flatopolite di "Malati di pulito"
Assunto dal Comune, gradisce le mance.

TAPPETO
STESO AI
DUE FLATSOLI

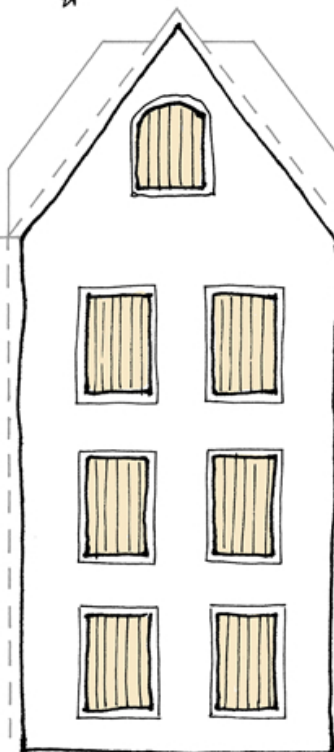


(L)

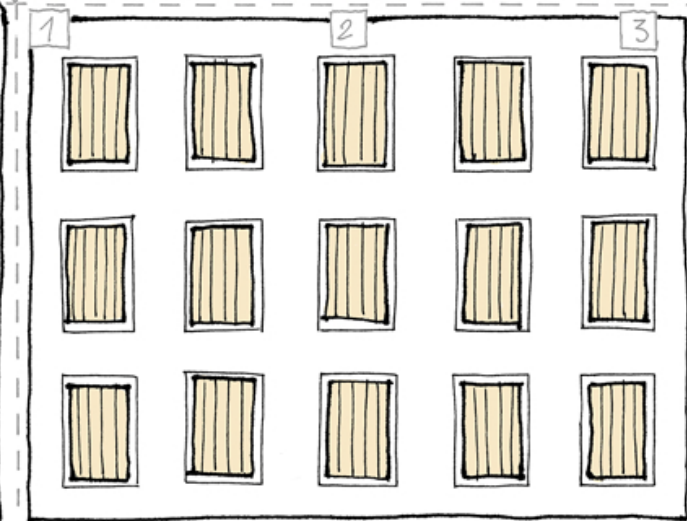


(M)

(A)



(A)

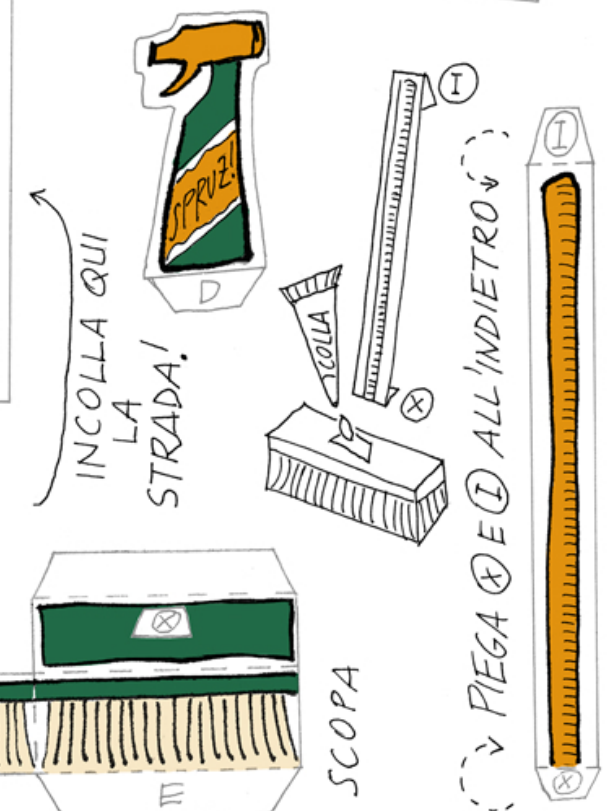
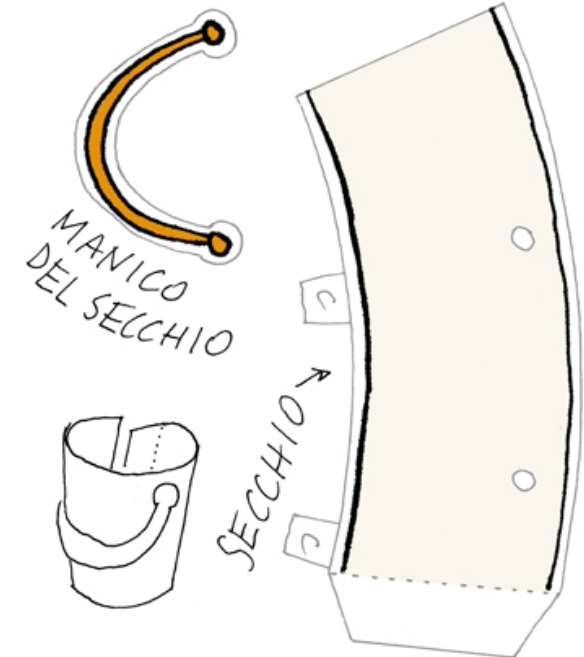
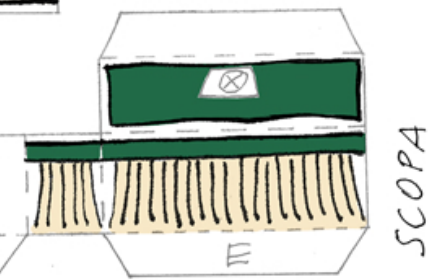
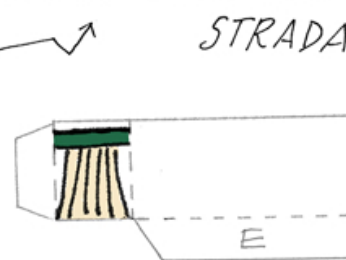
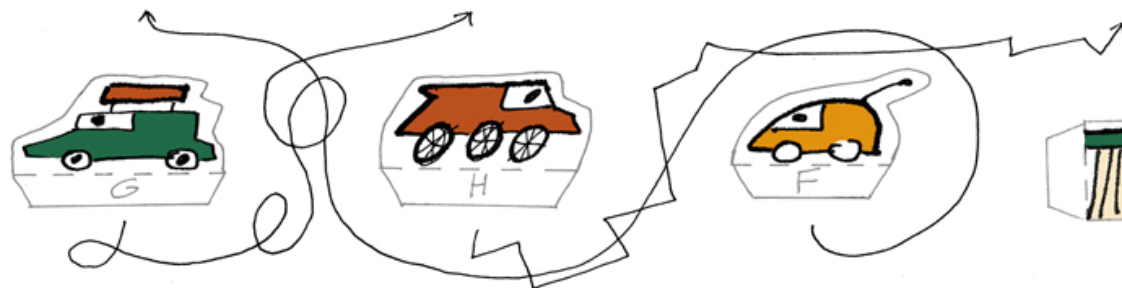
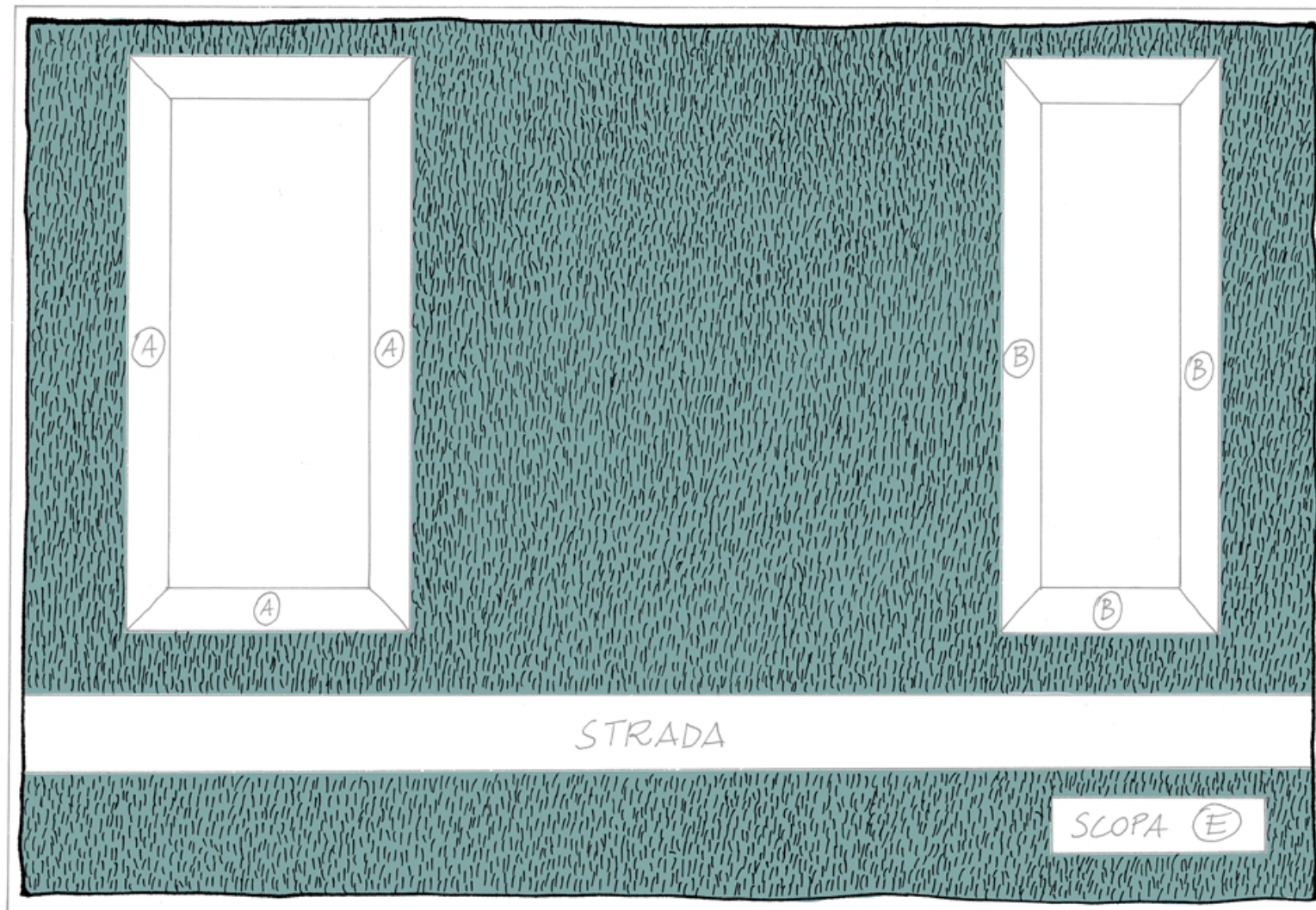


1

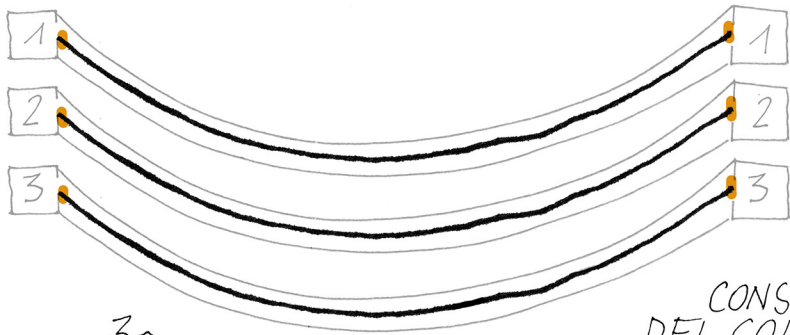
2

3

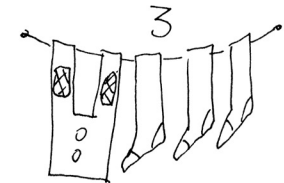
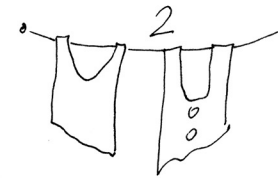
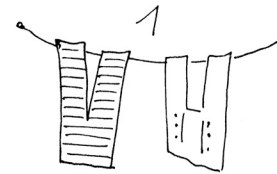
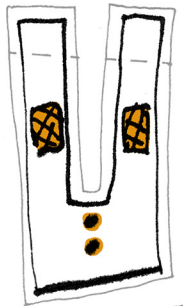
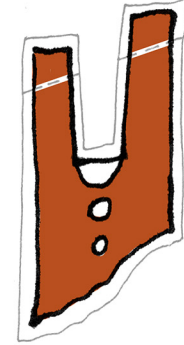
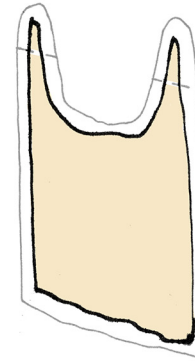
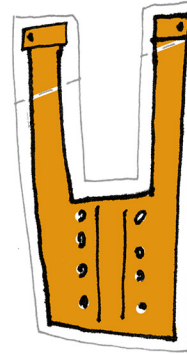
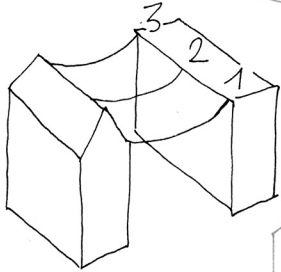
(A)



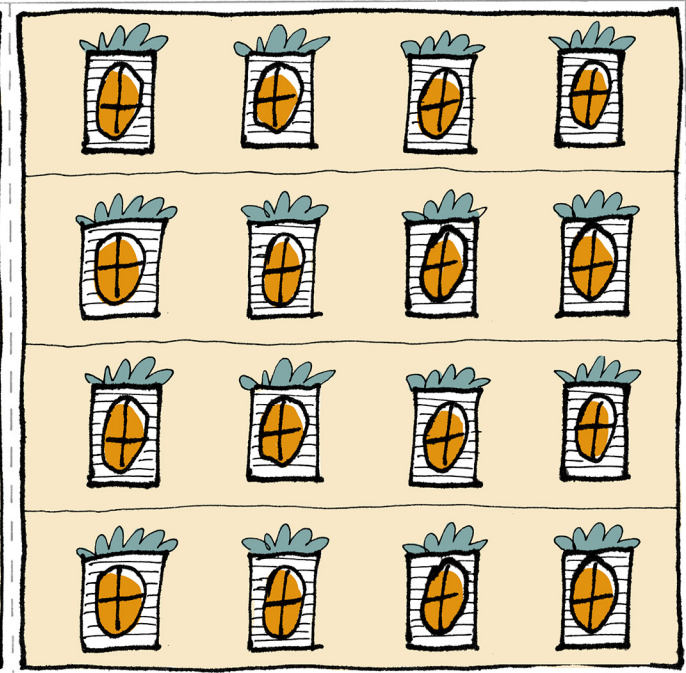
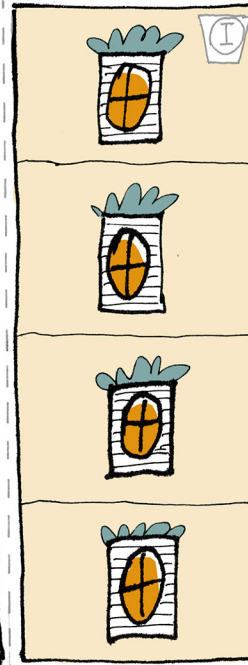
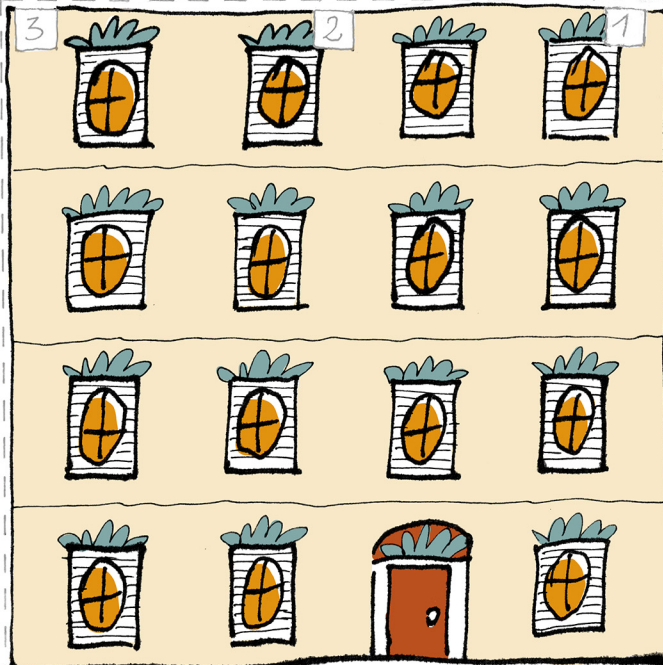
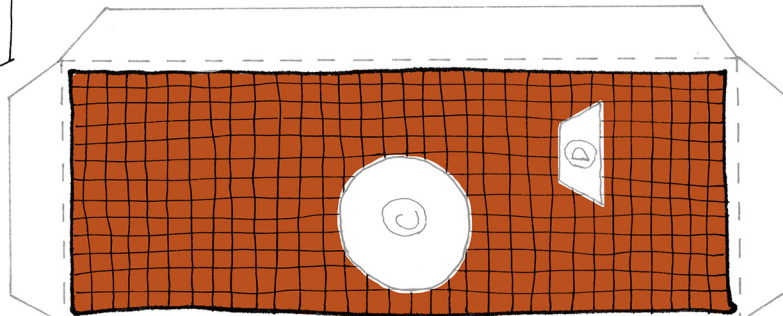
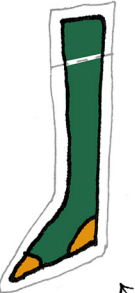
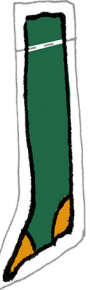
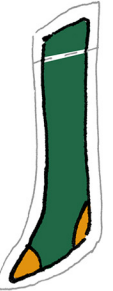
INCOLLA QUI LA STRADA!



CONSIGLIO
DEL COLFO:
SE STENDETE BENE I PANNI
POI NON DOVRETE STIRARLI.



PIEGARE I PANNI SUL TRATTEGGIO E
STENDERLI METTENDO UNA GOCCIA DI COLLA



• WWW.FLATOPOLIS.IT •

3 CALZINI
PERCHÉ IL
COLFO HA
3 PIEDI →